



# Beaufort County Public Works Stormwater Infrastructure Project Summary

**Project Summary:** Shiney Road Outfall

**Activity:** Drainage Enhancement

**Narrative Description of Project:**

**Completion:** Dec-12

Project improved 827 L.F. of drainage system. Grubbed, cleared and reconstructed 827 L.F. of outfall ditch and workshelf. Installed (1) access pipe, (1) bleeder pipe, (1) access gate, rip rap and hydroseeded for erosion control.

2011-013 / Shiney Road Outfall	Labor Hours	Labor Cost	Equipment Cost	Material Cost	Contractor Cost	Indirect Labor	Total Cost
AGI / Access Gate - Installed	4.0	\$91.43	\$8.04	\$184.31	\$0.00	\$58.13	\$341.91
APINS / Access pipe - installed	11.0	\$261.47	\$110.96	\$164.02	\$0.00	\$166.37	\$702.82
AUDIT / Audit Project	1.0	\$20.89	\$0.00	\$0.00	\$0.00	\$13.23	\$34.12
CLJS / Cleaned up jobsite	20.0	\$449.30	\$40.20	\$19.07	\$0.00	\$266.70	\$775.27
DLO / Ditch Layout	20.0	\$449.30	\$40.20	\$17.92	\$0.00	\$266.70	\$774.12
HAUL / Hauling	125.0	\$2,722.61	\$1,299.47	\$3,250.25	\$0.00	\$1,769.69	\$9,042.02
HYDR / Hydroseeding	18.0	\$404.37	\$48.62	\$264.81	\$0.00	\$240.03	\$957.83
LM / Loading Materials	12.0	\$313.92	\$284.64	\$57.35	\$0.00	\$225.88	\$881.79
NONPRO / Non-Professional Services	0.0	\$0.00	\$0.00	\$0.00	\$600.00	\$0.00	\$600.00
ODCO / Outfall ditch - cleaned out	12.0	\$313.92	\$324.04	\$87.02	\$0.00	\$225.88	\$950.86
ONJV / Onsite Job Visit	5.0	\$158.77	\$12.06	\$17.67	\$0.00	\$124.73	\$313.23
SG / Shoot Grade	20.0	\$449.30	\$40.20	\$16.18	\$0.00	\$266.70	\$772.38
WSDR / Workshelf - Dressed	21.0	\$506.80	\$226.72	\$52.52	\$0.00	\$333.88	\$1,119.92
WSGRB / Workshelf - Grubbed	103.0	\$2,359.58	\$976.37	\$615.78	\$0.00	\$1,530.50	\$5,482.23
<b>2011-013 / Shiney Road Outfall Sub Total</b>	<b>372.0</b>	<b>\$8,501.66</b>	<b>\$3,411.52</b>	<b>\$4,746.91</b>	<b>\$600.00</b>	<b>\$5,488.42</b>	<b>\$22,748.51</b>
<b>Grand Total</b>	<b>372.0</b>	<b>\$8,501.66</b>	<b>\$3,411.52</b>	<b>\$4,746.91</b>	<b>\$600.00</b>	<b>\$5,488.42</b>	<b>\$22,748.51</b>

Before



During



After



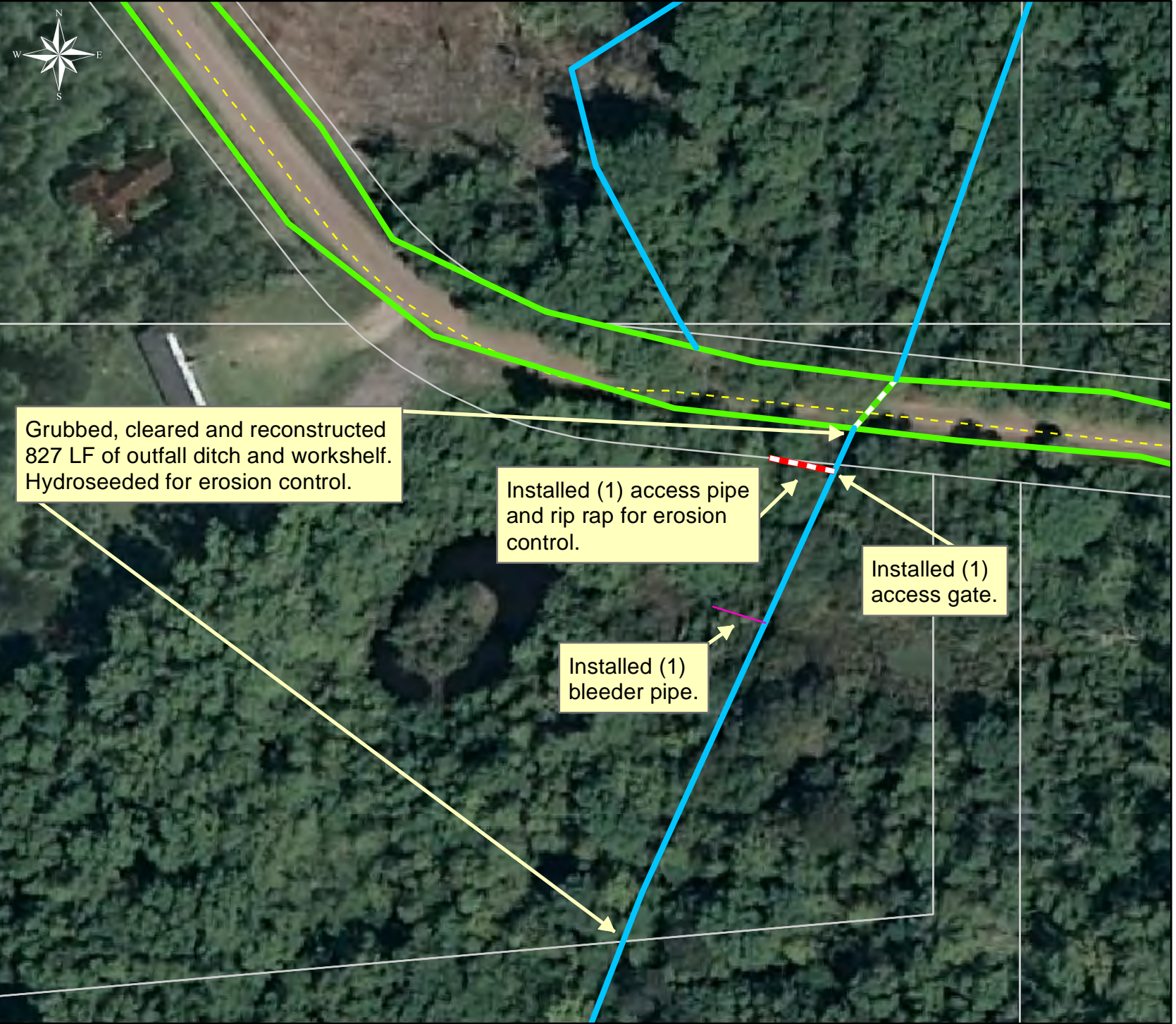
Project: Shiny Road Outfall

Activity: Drainage Enhancement

Project #: 2011-013

Township: St. Helena Island

Completed: December 2012



Grubbed, cleared and reconstructed 827 LF of outfall ditch and workshelf. Hydroseeded for erosion control.

Installed (1) access pipe and rip rap for erosion control.

Installed (1) access gate.

Installed (1) bleeder pipe.

**Legend**

**Drainage Type**

- River
- Stream
- Outfall
- Lateral
- Lateral Pipe
- Roadside
- Roadside Pipe
- Crossline
- D/W
- Access
- Piped
- Bleeder
- Parcels



1 inch = 77 feet